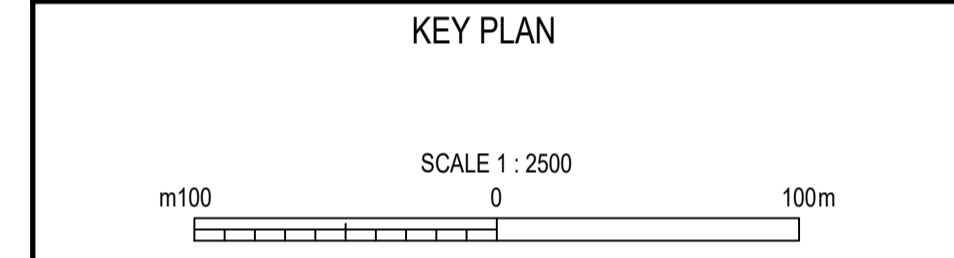
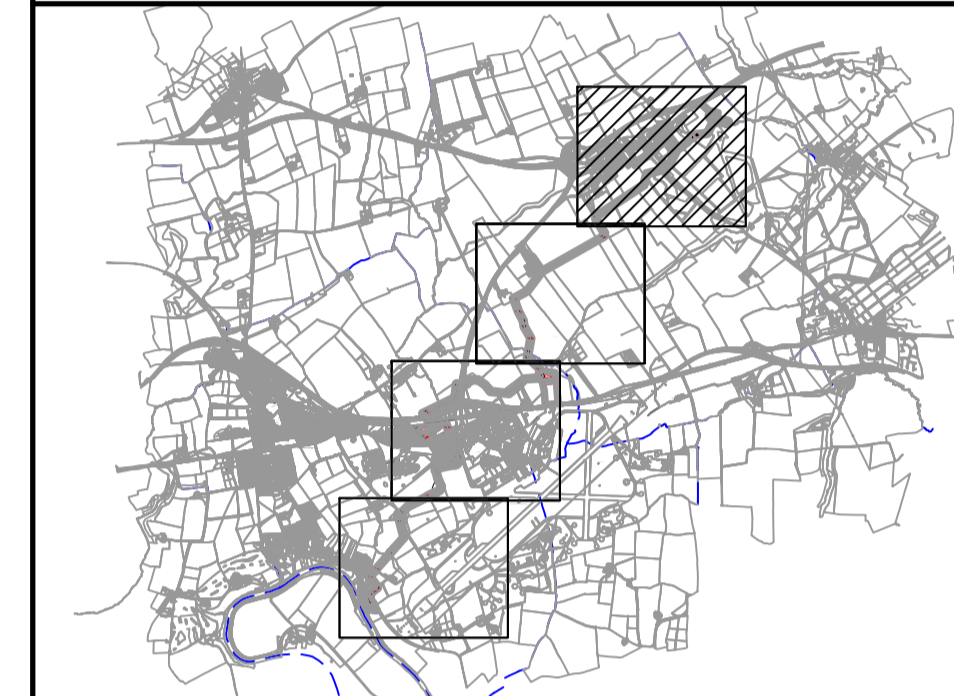


DRL No. ST023_0134-001-DWG-PIP-Y01-012

- NOTES**
- ALL DIMENSIONS IN MILLIMETRES AND ALL LEVELS IN METRES UNLESS SHOWN OTHERWISE.
 - EXACT LOCATION OF AIR VALVE, WASHOUT AND MANHOLE CHAMBERS TO BE CONFIRMED.

- REFERENCES**
- ST023_0134-001-DWG-PIP-Y01-013 PROPOSED SITE PLAN - PIPE ROUTE 2 OF 4
 - ST023_0134-001-DWG-PIP-Y01-014 PROPOSED SITE PLAN - PIPE ROUTE 3 OF 4
 - ST023_0134-001-DWG-PIP-Y01-015 PROPOSED SITE PLAN - PIPE ROUTE 4 OF 4

- LEGEND**
- RED LINE BOUNDARY
 - TEMPORARY COMPOUND AREA
 - PROPOSED AIR VALVE CHAMBER
 - PROPOSED WASHOUT CHAMBER
 - PROPOSED PIPE ROUTE
 - COUNCIL BOUNDARY



CURRENT VERSION INFORMATION

NO.	DATE	BY	DESCRIPTION	APPROVED	CHECKED	REVIEWED	DATE
P02	S2	DgH	FOR INFORMATION	LA	LZ		19.12.2023
P01	S2	PAB	FOR INFORMATION	LA	LZ		31.10.2023
REVISION	STATUS	SUITABILITY DESCRIPTION	AUTHORED	CHECKED	REVIEWED		DATE

NORTHUMBRIAN WATER GROUP
WINEP TEESIDE TRANSFER

PROPOSED SITE PLAN - PIPE ROUTE
1 OF 4

THIS DRAWING IS ISSUED BY STANTEC UK SUBJECT TO THE CONDITIONS THAT IT IS NOT COPIED EITHER IN WHOLE OR IN PART OR DISCLOSED TO THIRD PARTIES UNLESS PRIOR WRITTEN AUTHORISATION IS GIVEN BY STANTEC UK. PREVIOUS VERSIONS OF THIS DRAWING SHOULD BE STAMPED SUPERSEDED OR DESTROYED. DO NOT SCALE THIS DRAWING - IF IN DOUBT ASK



CLIENT CONTRACT NO. ST023/0134	SCALE 1 : 2500	MASTER SIZE A1	STATUS S2
DRAWING NO. 331003043-STN-XX-XX-DR-T-0008			REVISION P02

CONTINUATION TO DRAWING NUMBER ST023_0134-001-DWG-PIP-Y01-013