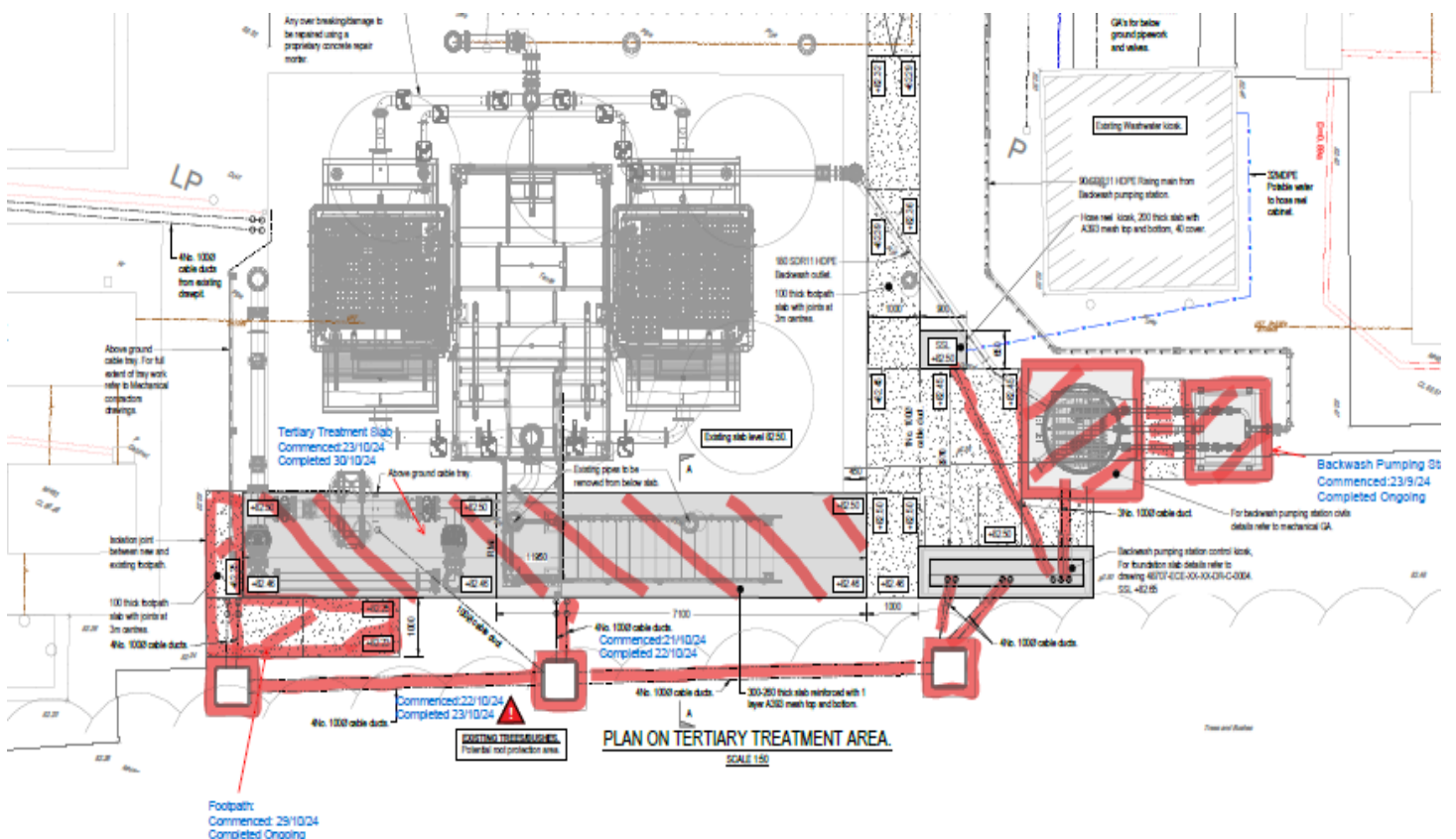


## John Goose Galliford Try Project Manager Updates:

### Progress made in the month:

- Continue with the Back wash pumping installation – connect the valve to the PS
- Ducting install
- Duct chambers installed
- Mowing strips installed
- Concrete slab extension
- Concrete footway installation
- Topsoiling

### Plan showing works undertaken at the time of report



Ducts draw pit to kiosk



Mowing Strip



Slab extension



Footpath extension



Landscape topsoiling working out



**Activities Planned for next month.**

- Electrical works to connect the HSAF units
- Test the HSAF units
- Install the over pumping and pumps and Tanks
- Continue with the civils works