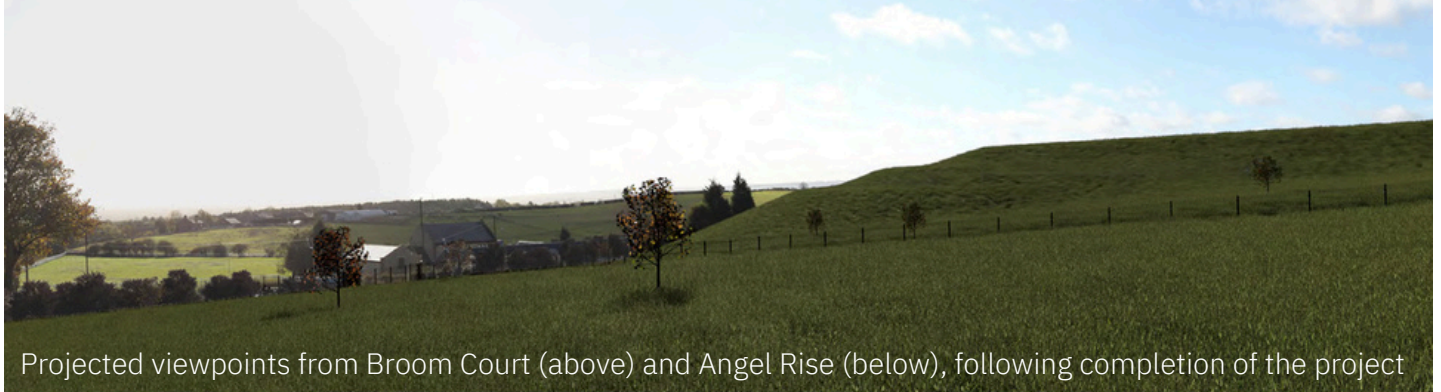


Autumn/Winter
2024

Scan this code with your smartphone to
visit our Community Portal and sign up
for regular updates.



Projected viewpoints from Broom Court (above) and Angel Rise (below), following completion of the project



WELCOME

Hello again and welcome to our latest update from the Springwell Enhancements project team, led by Northumbrian Water and Mott MacDonald Bentley (MMB).

Work is continuing at pace to create our drinking water reservoir and its pipework connections, to deliver water supply resilience benefits to more than 250,000 customers across South Tyneside and Wearside.

As we near the end of the year, we want to give you an update on progress, take a look at some of the key activities in the coming months, and a reminder on how things will look when work is complete.

Please note that our site will shut down over the festive break, from December 20 to January 2.

MEET THE TEAM



Many of you will know the team, but for those of you who don't, this is Northumbrian Water Project Manager Richard Johnston and Sarah-Jayne Parvin, MMB's Lead Customer Liaison Officer.

You can contact them at
richard.johnston@nwl.co.uk and
sarah-jayne.parvin@jnbentley.co.uk.

CONSTRUCTION UPDATE

Reservoir site

Good news. Construction on the reservoir structure is now complete.

In the early New Year, we will be working on the reservoir inlet pipes, but we don't anticipate any impact for customers from this. This will allow for filling and testing in late Spring, early Summer.

Other work starting in January include:

- Creation of the access road to the north of the site.
- Work with Northern Powergrid (NPG) to install the power supply. This will involve us working on Mount Park Road, with two way lights (we will maintain access on at least one footpath at all times). We are bringing in an alternative power supply to ensure our pumping station continues to operate, protecting water supplies for customers. However, some customers may experience lower than normal pressure at that time.

Both of these pieces of work are scheduled to complete in February.



Pipelines

We've completed from Springwell Road to Peareth Hall Road, while the section from Pikes Hall to the A194, is due to see pipelaying finish before Christmas.

The section which runs from the A194/A195 Follingsby Interchange to Peareth Hall Road is also close to completion. We've been carrying out some safety work on the rock face next to the A194 hard shoulder, and are now laying the final pipes. While we hope to finish before Christmas, this may run into the very early new year.

You may also be aware we've used tunneling techniques in three areas to reduce the impact of our work. This has enabled us to pass the pipeline beneath the Bowes Railway, protecting this Scheduled Ancient Monument, and under the River Don. Most recently, we constructed a 350m tunnel under Follingsby Interchange, allowing us to avoid impacting this important junction.



Public rights of way (PROW) update

Again, we know that public rights of way (PROWs) are very important to you, and that some of the necessary closures have taken longer than anticipated. We appreciate your patience.

We will re-open the PROW from Peareth Hall Road to Leam Lane, once pipelaying is complete and are working with Sunderland City Council on restoration plans. During reinstatement of land, hedgerows and the trees, some short-term intermittent closures may be required for safety purposes. We will work hard to make sure these are communicated should they be necessary.

We are also working to open up the PROW at Eighton Banks over the Christmas period. While some heras fencing will remain, the PROW will not be blocked.

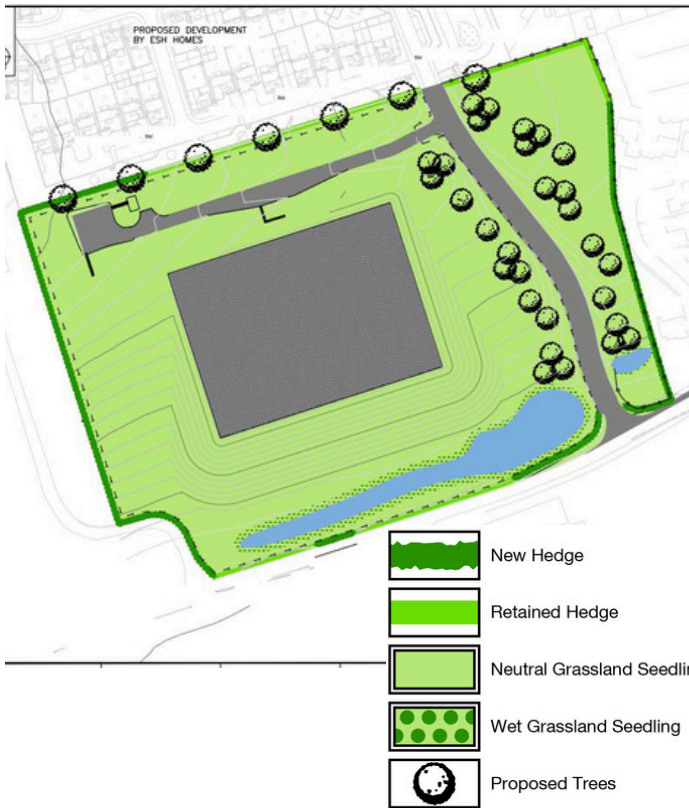
You may also be aware that our work on the junction of Galloping Green Lane and Thomas Street was moved to start on January 6th, to avoid impacting The Waggon over Christmas. This will be for four weeks, followed by a further four weeks of pipelaying on Galloping Green Road.

THE FUTURE OF THE SITE

With the completion of construction work close, reinstatement of our working areas will begin in 2025, following completion of landowner agreements, where necessary.

We want to be clear that our land restoration work and the creation of Biodiversity Net Gain (BNG) – leaving the area’s environment better than we found it, in terms of biodiversity – are not a “nice to do” for us. They are an important element of the project and we take our responsibility to deliver our own environmental plan, and the planning conditions set out in relation to this, very seriously.

We continue to work closely with Sunderland City Council and Gateshead Borough Council regarding this.



This work will begin with soil restoration, followed by planting and seeding at the appropriate times of year to get the best results.

Backfilling has already started on the reservoir site. Completion timescales and elements such as the planting of trees and installation of sustainable drainage features will be determined after testing from late spring. Some elements, relating to the access road and crane pad laydown area, are subject to minor material planning amendments, and we will be sharing these changes with customers in Angel Rise.

Some subsoil is already on the pipeline sites, with topsoil to follow, as we work and consult with landowners to reinstate the land to its condition prior to our arrival.

As well as replacing hedgerow and planting new trees at the reservoir site (left), we will be looking to reinstate or replace:

Hedgerow

- South of Mount Lane, and south of the compound site, off Mount Lane;
- Between Washington Football Hub and Washington Riding Centre;
- On land parallel with, and to the west of, the A194
- On land south of, and also west of, Peareth Hall Road.

Woodland

- At the temporary access points off the A195 and at the working area North of Washington Football Hub;
- On land parallel with, and to the west of, the A194
- South of Peareth Hall Road.

Full copies of the full Landscape and Ecological Management Plan are available on request.

The reservoir roof

As many of you know, in 2022 we received planning permission to follow industry-wide guidance so that the roof of the reservoir can feature a rounded gravel to best protect water quality for our customers. This also makes removal of the cover easier and less disruptive when inspections or repairs are required.

The gravel type itself was chosen in consultation with neighbours on Mount Park View. With engineering design having factored this change in, and while we appreciate that some customers would prefer us to revert to grass, the gravel roof is something that we will now not be changing.

However, we have been working with, and continue to work with, those residents who directly overlook the top of the reservoir. This has allowed us to make different choices in relation to the access hatch type that further enabled us to agree changes to the fencing, in consultation with those residents, that will balance aesthetics and security.

IN THE COMMUNITY

SUPPORTING THE WELLBEING AND COMMUNITY GARDEN AT THE MOUNT

As part of our work to support the community during our time in Springwell, we have worked with Skills 4 Work to help with the creation of a wellbeing and community garden at The Mount Community Centre.

The space is used for gardening sessions as part of the charity's work to support young adults with disabilities and/or mental health conditions to make the difficult transition from education into the workplace.

We used recycled stone from one of our working areas to create the foundation layer of the garden's pathways, and contacted Breedon and James Burrell Builders Merchants to place an order for the decorative stone. Both companies added their support, with Breedon donating the gravel for free, and James Burrell giving a generous discounted rate.

In all, the team transported, shoveled and laid 27 tonnes of stone across three sessions, to create the safe pathways through the sensory garden.



A NEW READING SPACE FOR PUPILS



The new reading cabin, which will give a dedicated space for the children's library, is now in place at Springwell Village Primary School.

Supported by the Springwell Village Residents' Association and with help from partners at Wernick's, Thompsons, Old Haulage and Intellect, a site cabin was lifted into place in the school yard, complete with electrical installation, and now a local artist has been engaged to design the outside so that it looks fantastic.

A huge thank you to all the partners who came on board to make this happen.

KEEPING YOU INFORMED

These newsletters, which will continue through our work on this project, build upon the ways we have communicated with you, our customers, before and during the work so far.

Alongside these newsletters, we will continue to:

- **Post regular updates on the Community Portal and to those who have asked for updates via e-mail.**
- **Hold further drop-in sessions at the Cosy Café, from 11.30am to 2pm on the second and third Thursday of the month (not including December 26).**
- **Hold further drop-in sessions, which we will communicate details of in advance, via a range of channels.**